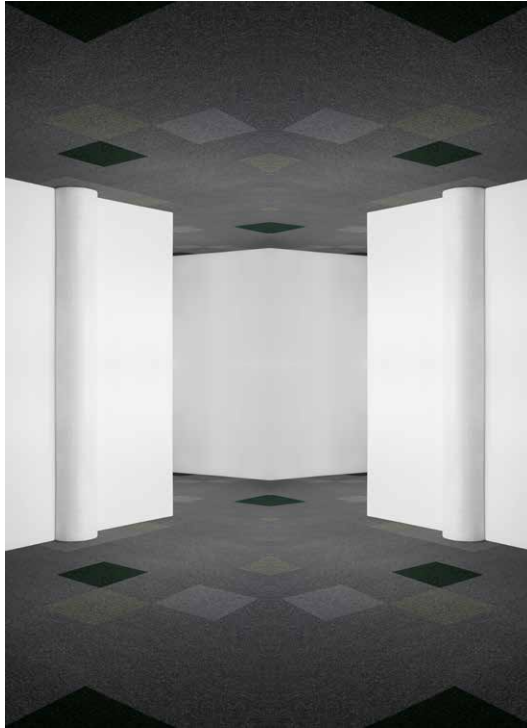


THE URGE  
TO EXPLORE  
SPACE  
REFERENCES  
TILES

**ege**<sup>®</sup>





## AROUND THE WORLD

Join us on a fascinating trip to experience how ege carpet tiles are turned into trendsetting flooring solutions in beautiful locations and spaces around the world. For more than seven and a half decades, ege has developed carpet concepts that combine individual expression with high quality and comfort and built up an extensive, inspiring and creative project portfolio. Explore the unicolour examples or the striking colour and pattern combinations, or the choice of different qualities for subtle variation.

We are proud to be leading the way by challenging the interior setting of the rooms that frame our lives. By experimenting with our fundamental perception of space, well-known elements seem new and compelling. And by playing with creative combinations in colours, patterns and materials, carpet tiles can be used as an exciting and attractive instrument for defining areas, communal zones, wayfinding – or simply just because it looks good.

The functionality and flexibility make carpet tiles especially suitable for contemporary and dynamic environments. ege carpet tiles weigh less than conventional carpet tiles making them easier to fit and work with. Adaptable to the continuous changes a company goes through, tiles can be removed whenever needed, providing easy and flexible access to the floor and cables underneath. Available in 48x48 and 96x96 cm. The Figura collection includes six different shapes.

Carpet tiles from ege is your truly green choice as used water bottles are recycled into our patented Ecotrust felt backing. All tile backings are Cradle to Cradle Certified™, and selected collections use ECONYL® that are strong and hardwearing yarns reborn from used fishing nets.

Enjoy the experience of every space in this brochure and find new inspiration for your own creations.



BY APPOINTMENT TO THE ROYAL DANISH COURT

ege carpets



A black and white photograph of a modern interior space. The main wall is made of large, light-colored concrete panels with visible horizontal and vertical joints. Several small, circular holes are spaced out on the wall. To the left, a white wall meets the concrete wall at a sharp angle. The floor is covered in a dense, textured carpet with a subtle pattern. The ceiling is a dark, perforated grid with a single circular light fixture. The word "REFORM" is printed in a large, black, sans-serif font across the middle of the image.

REFORM



**Meetingraum  
Glarus**

**Meetingraum  
Jura**

**Meetingraum  
Basel**

**F**









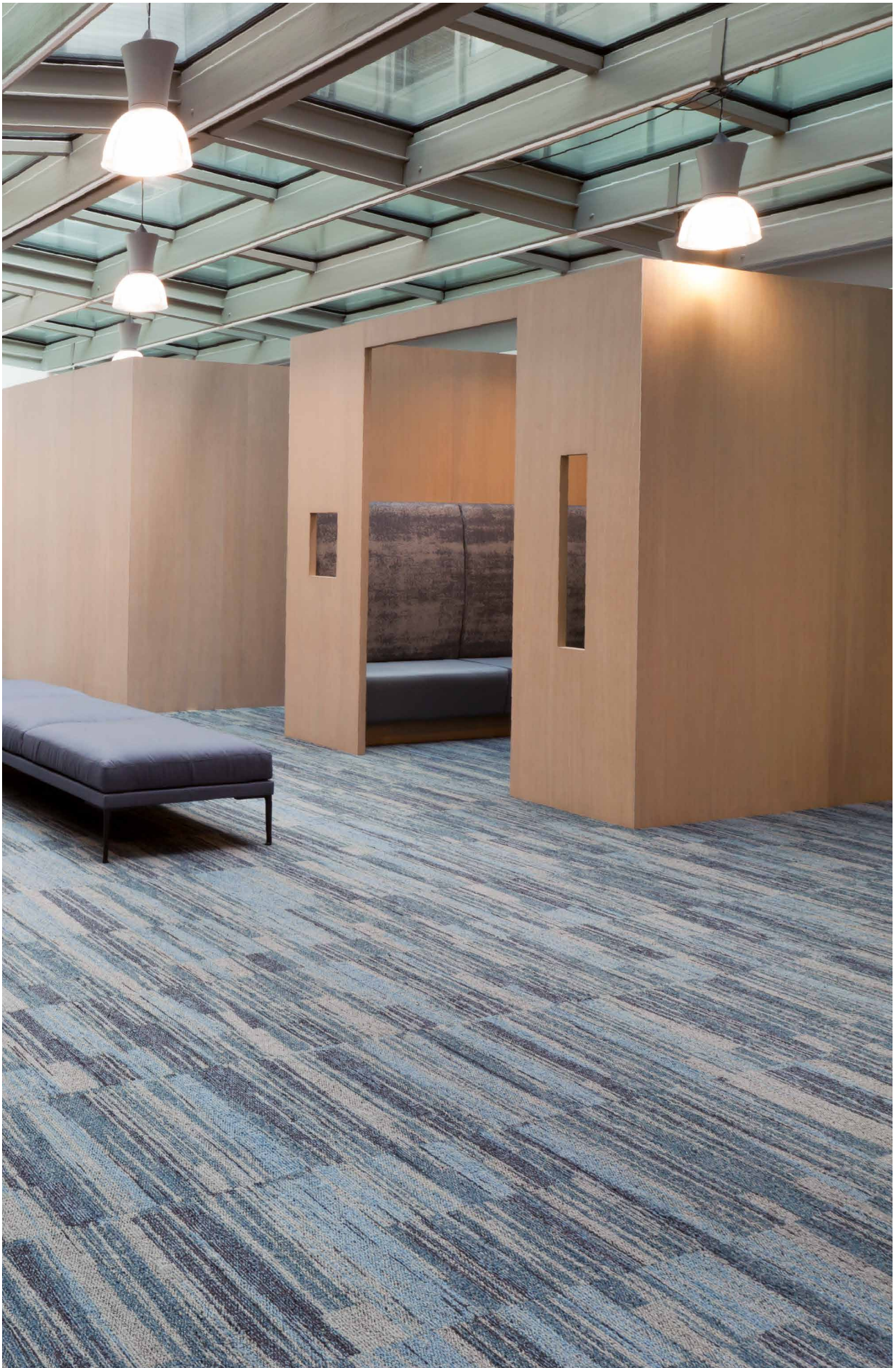




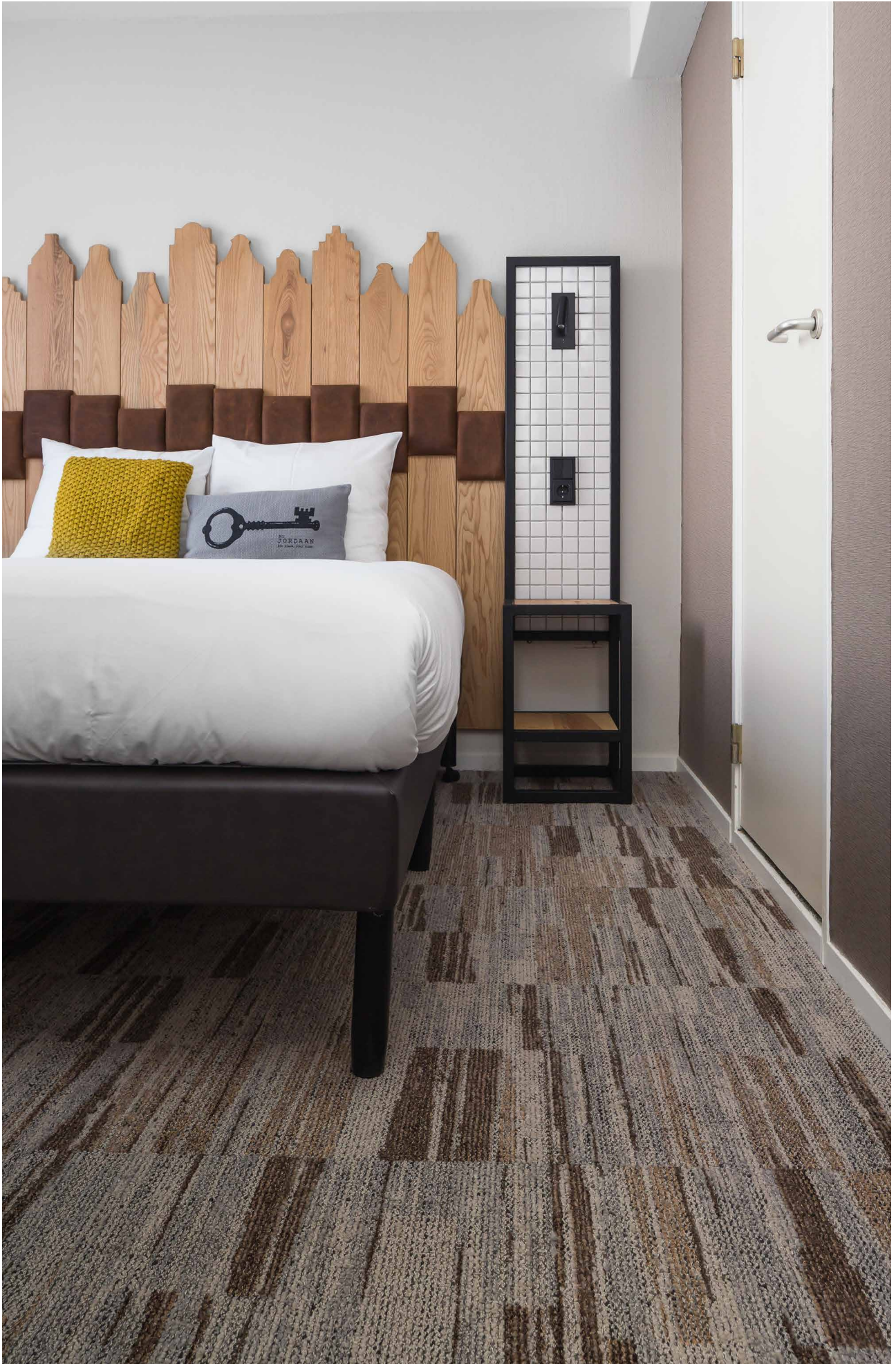












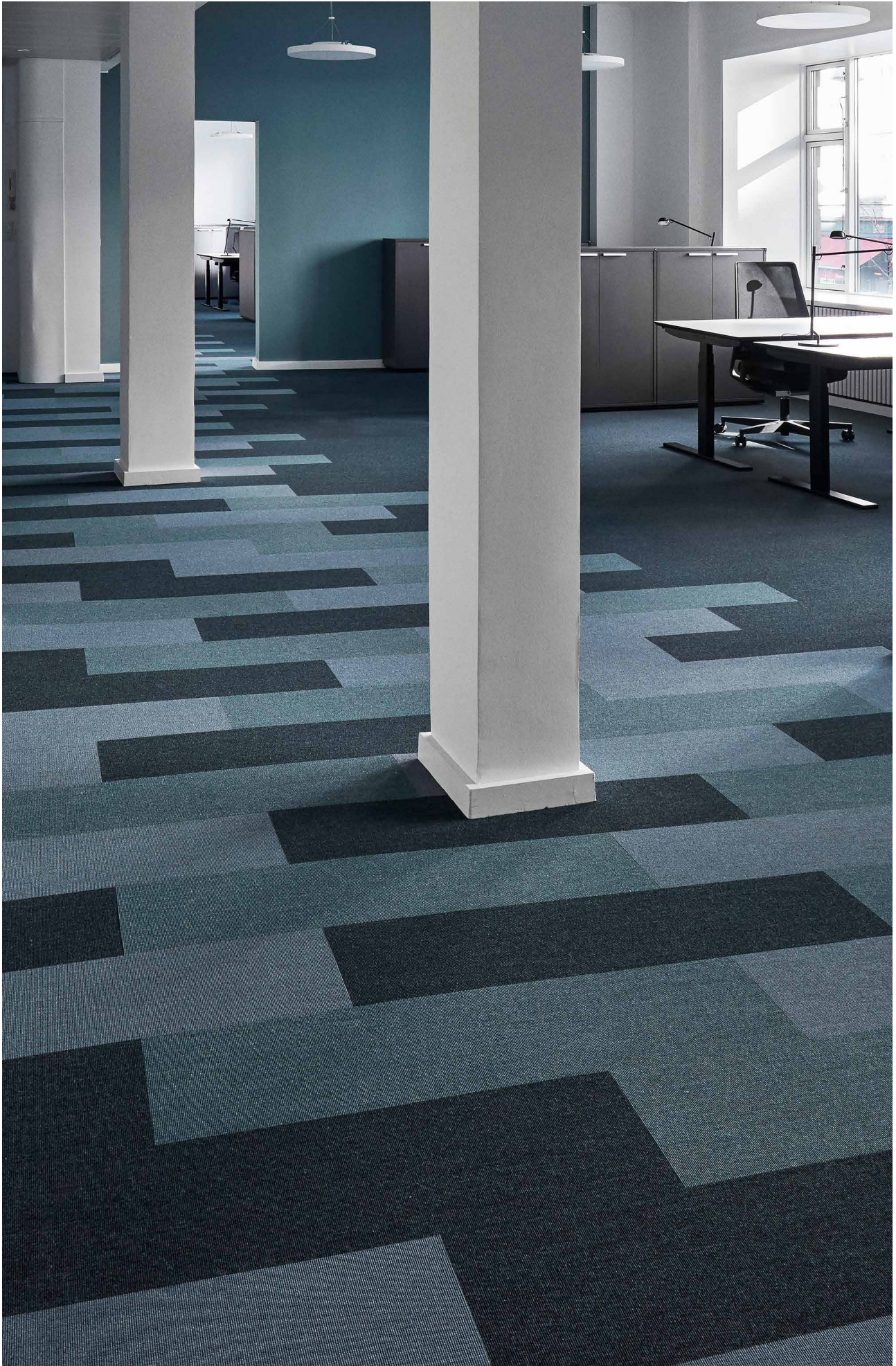


A modern office interior featuring a white desk, a green chair, a whiteboard, and large windows. The room is bright and airy, with a clean, minimalist aesthetic. The whiteboard has some faint blue markings on it. The floor is covered in a light-colored, textured carpet. The overall atmosphere is professional and contemporary.

EPOCA



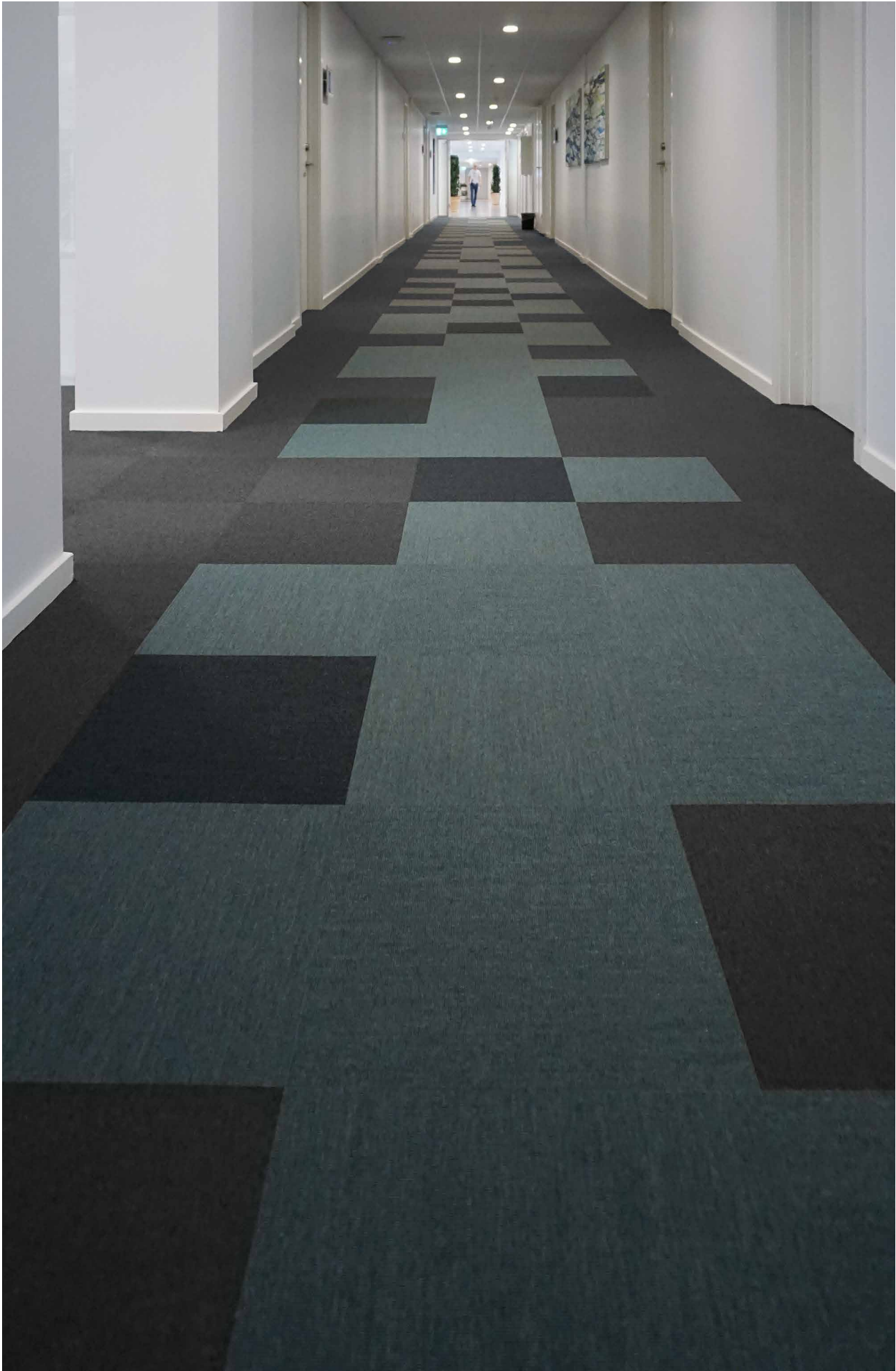








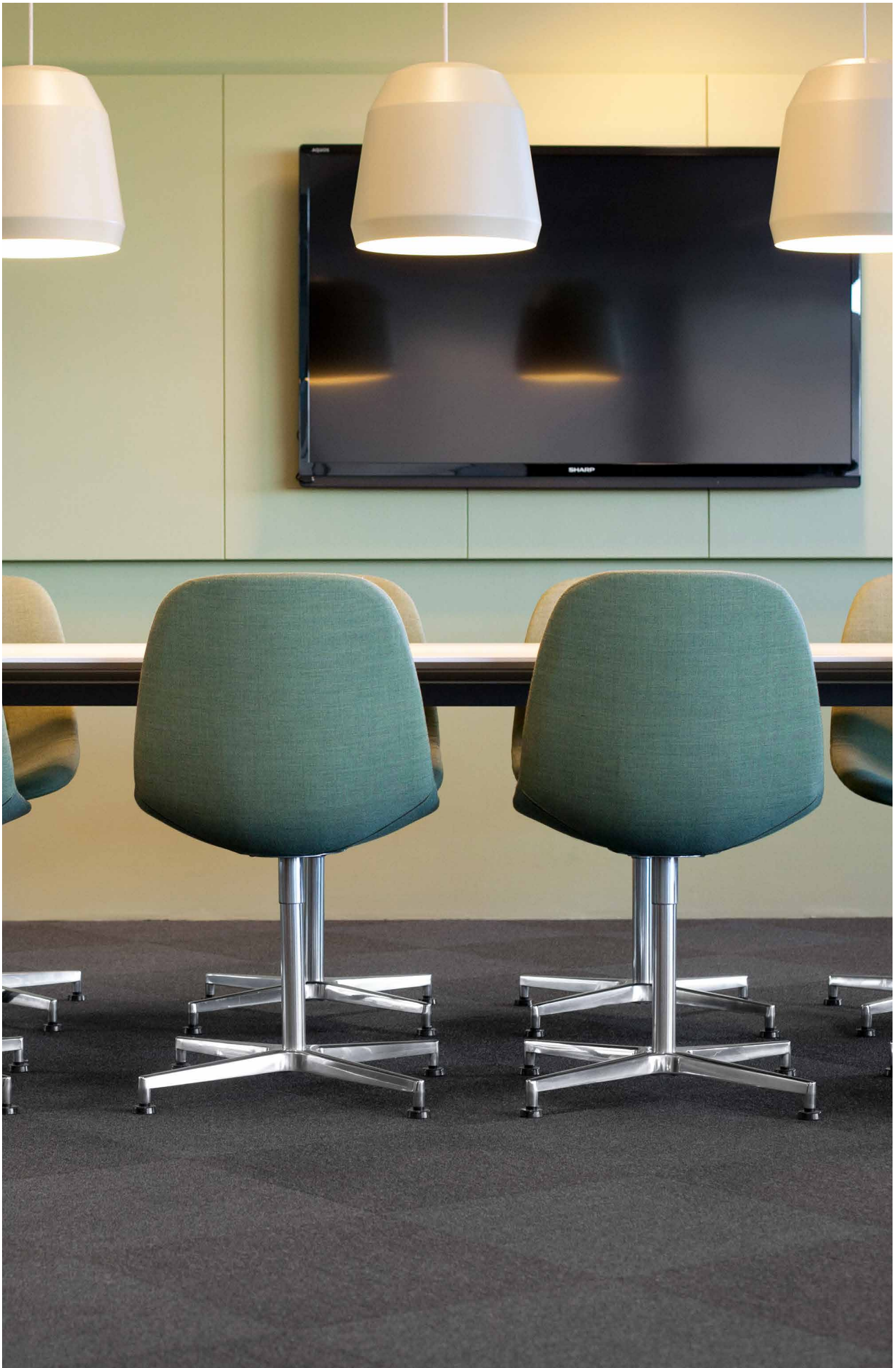


















# HIGHLINE



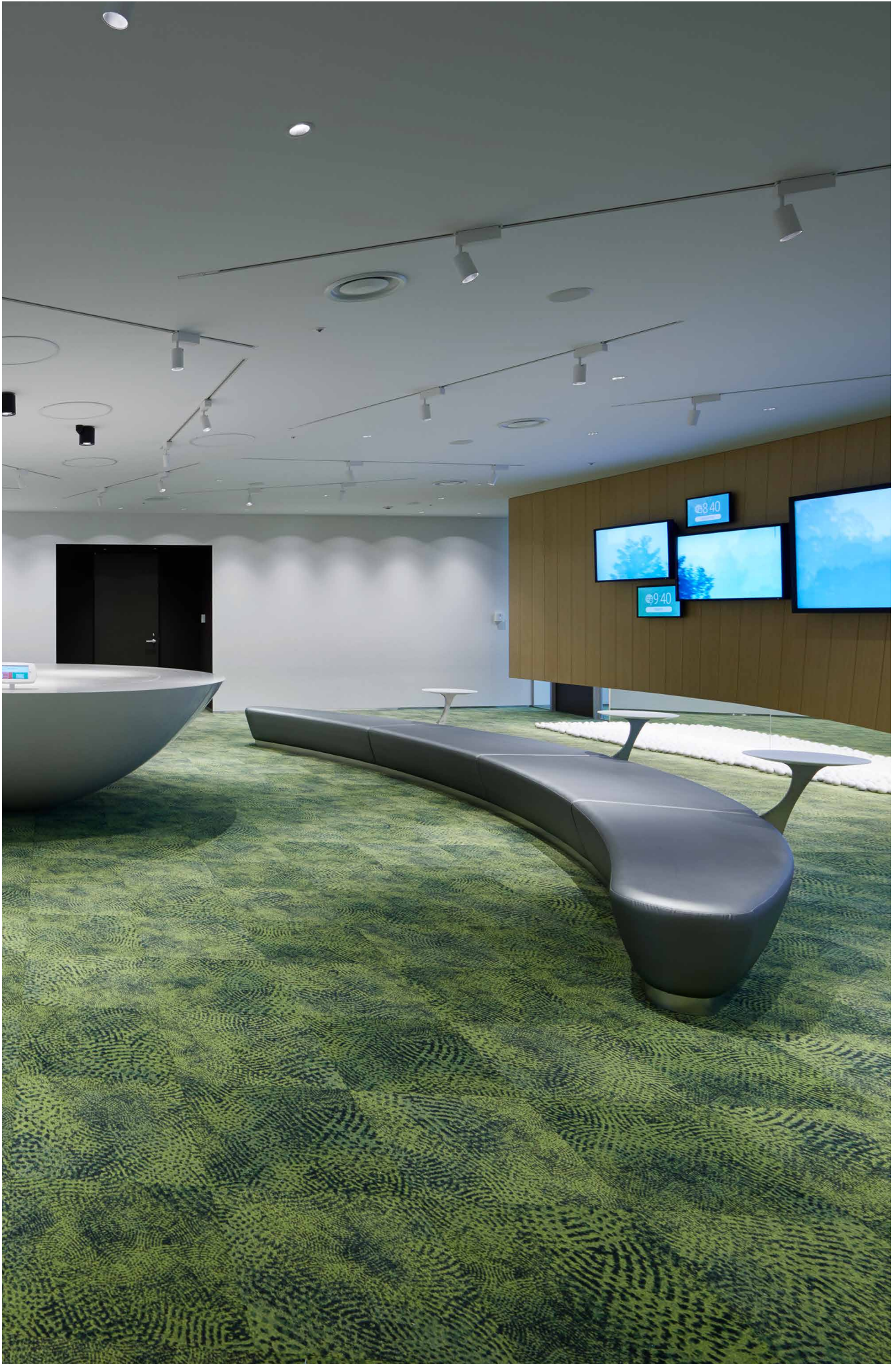












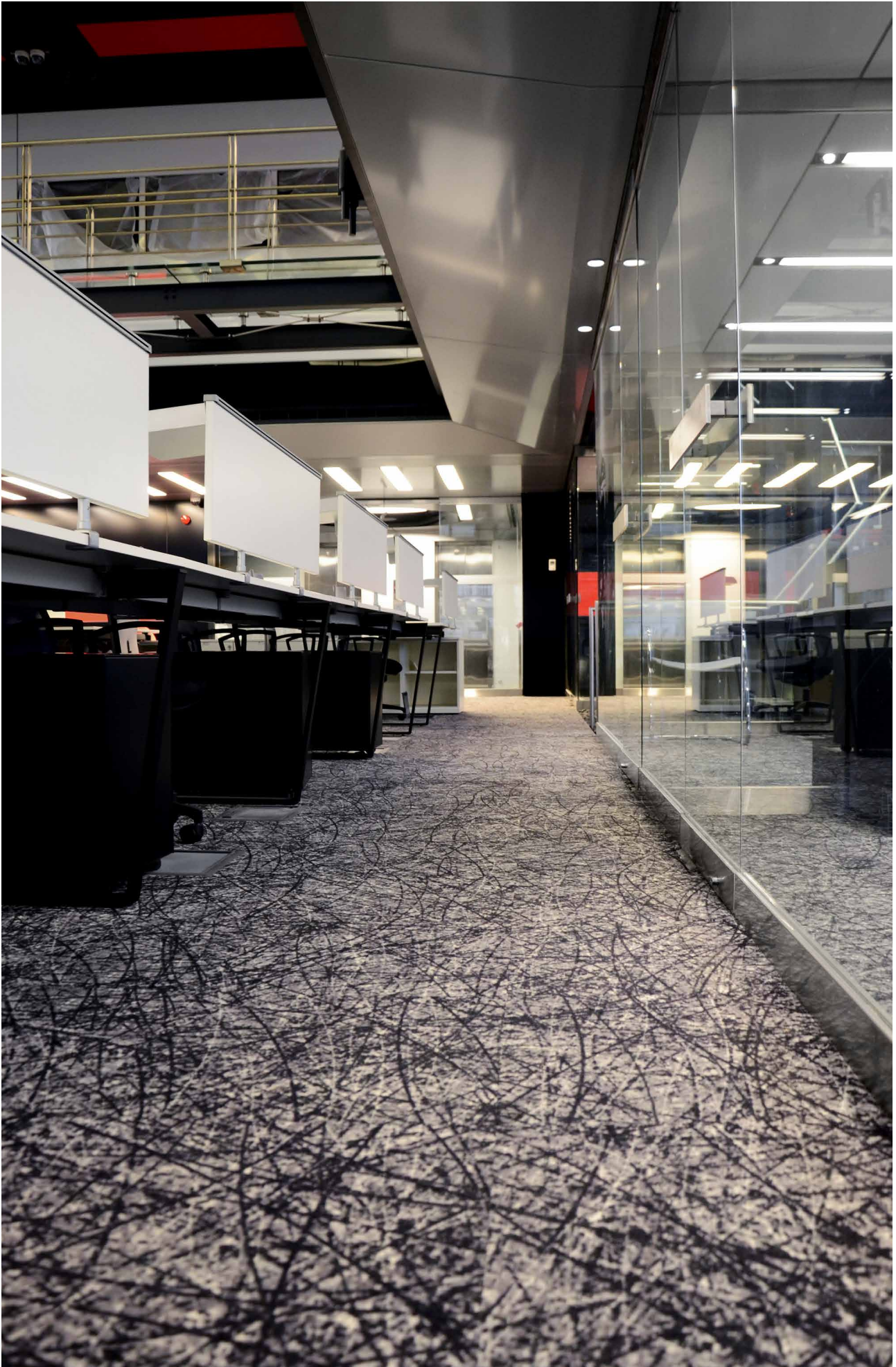












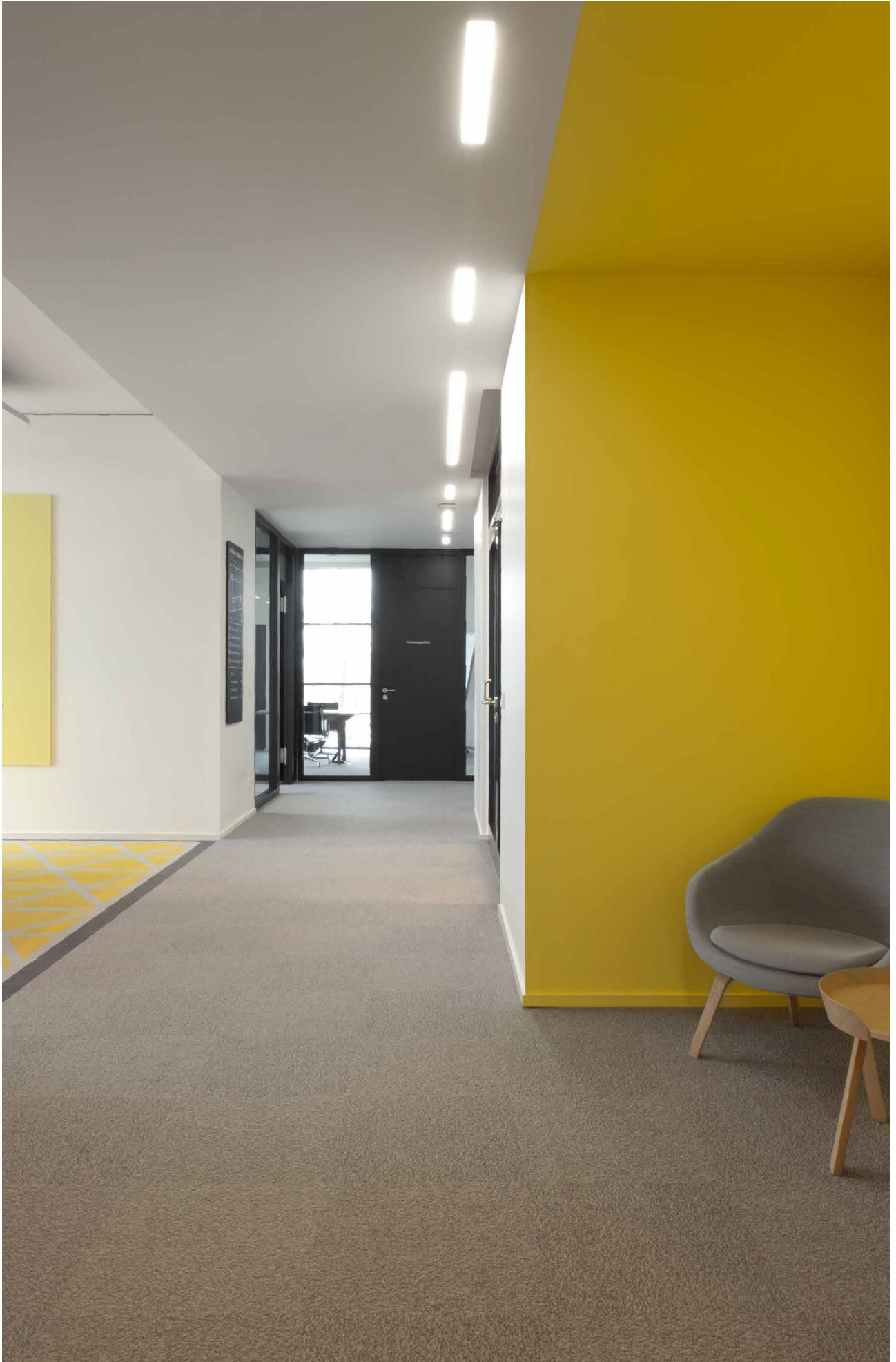








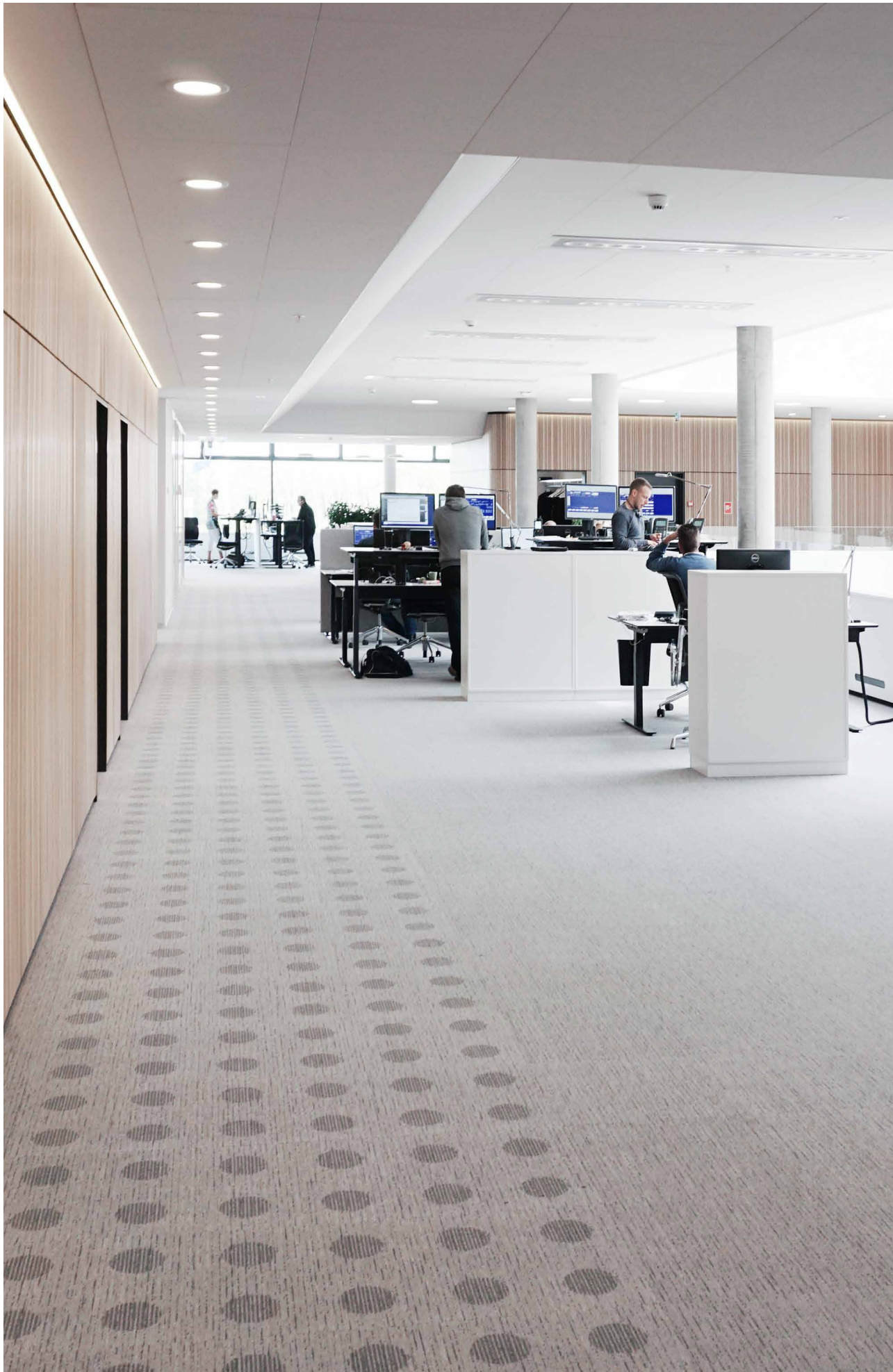




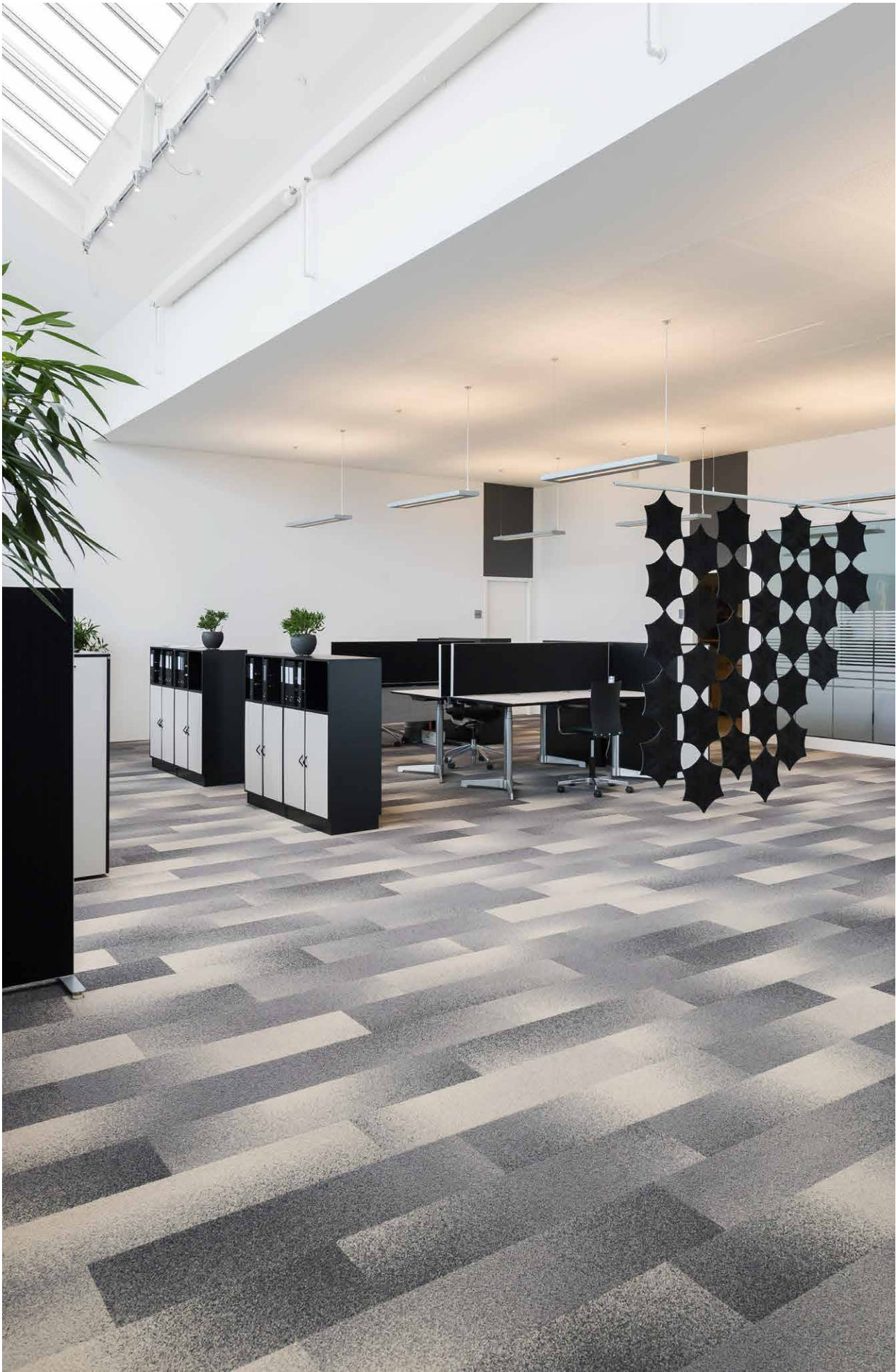








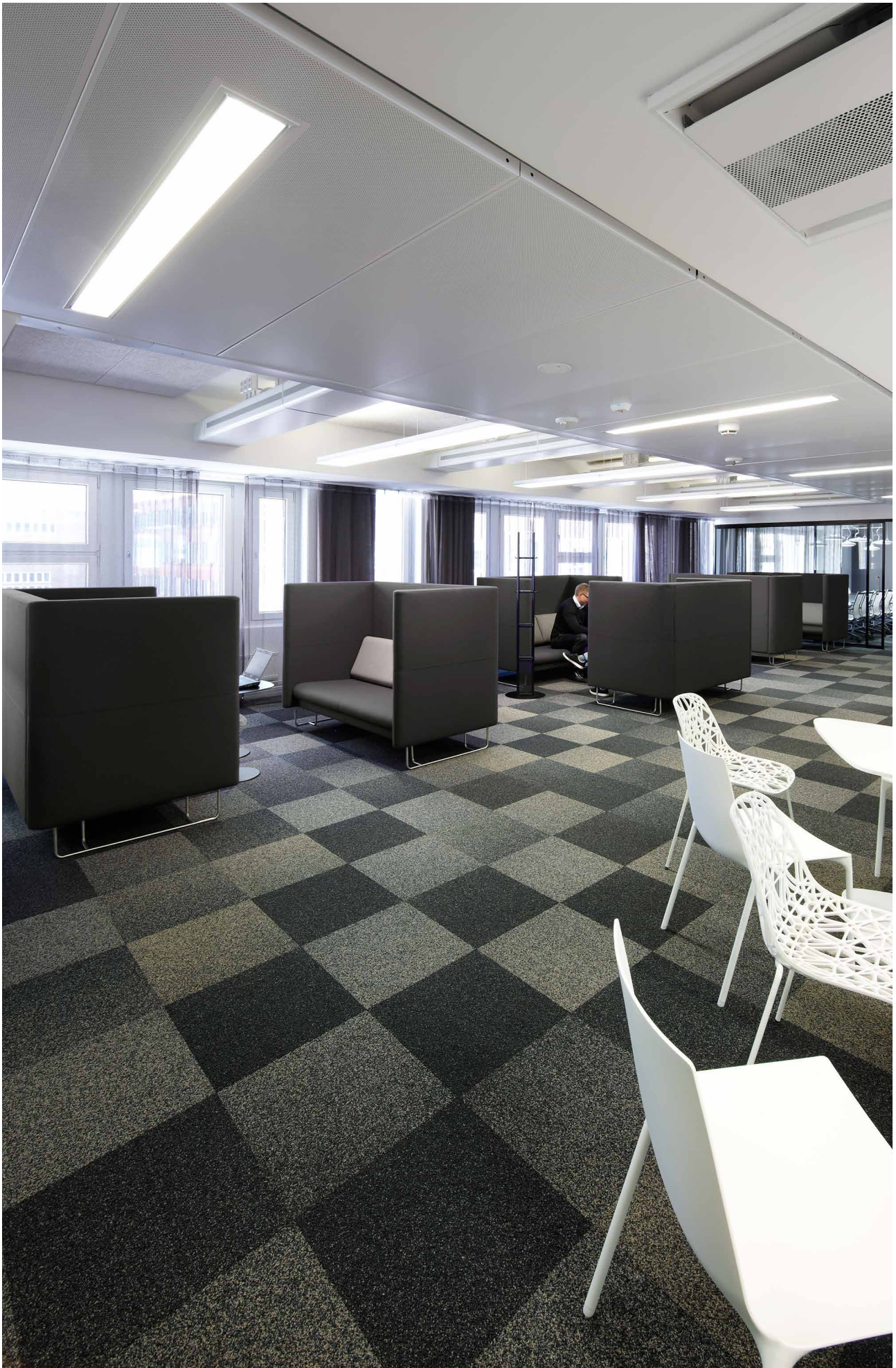








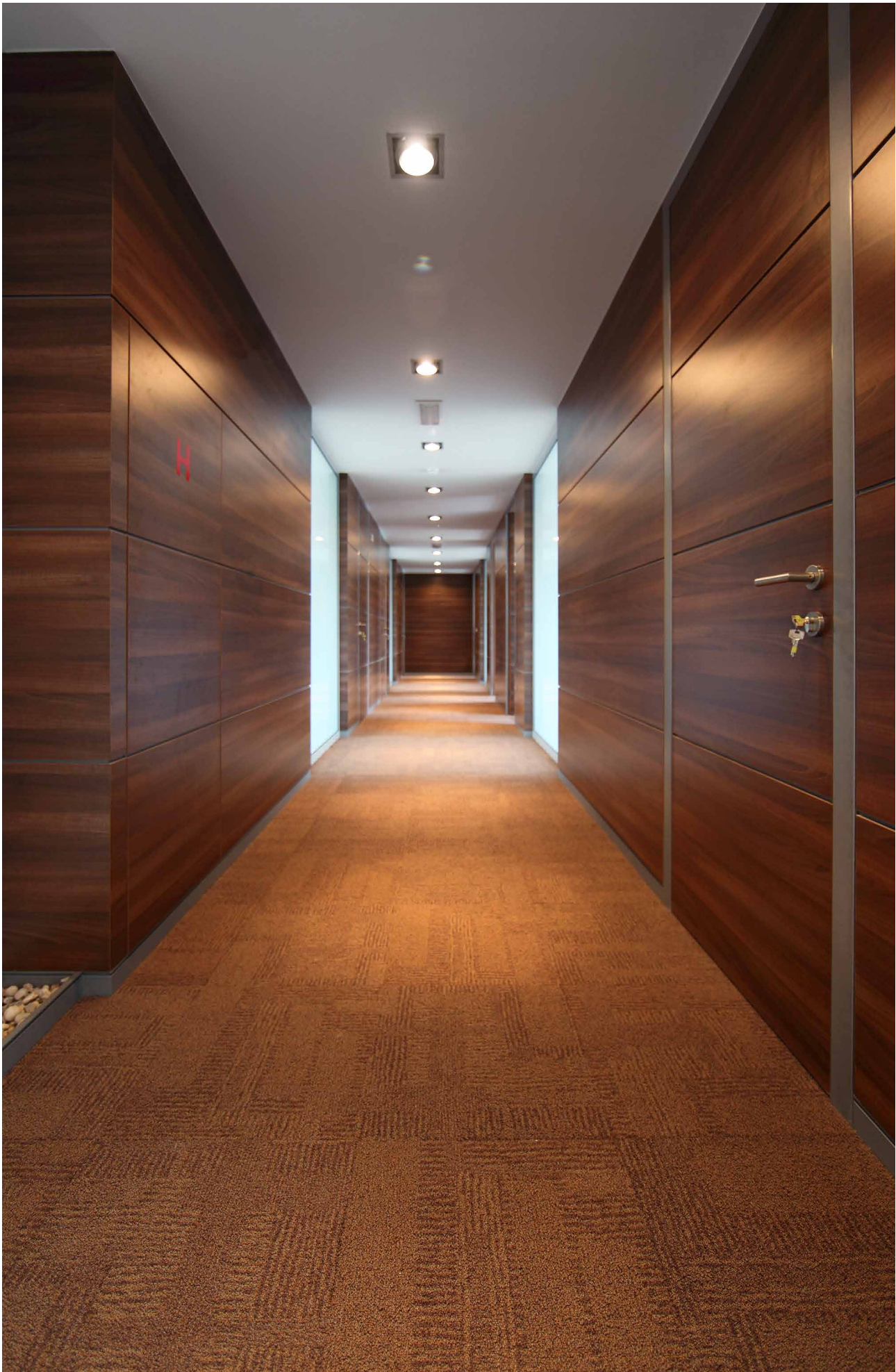




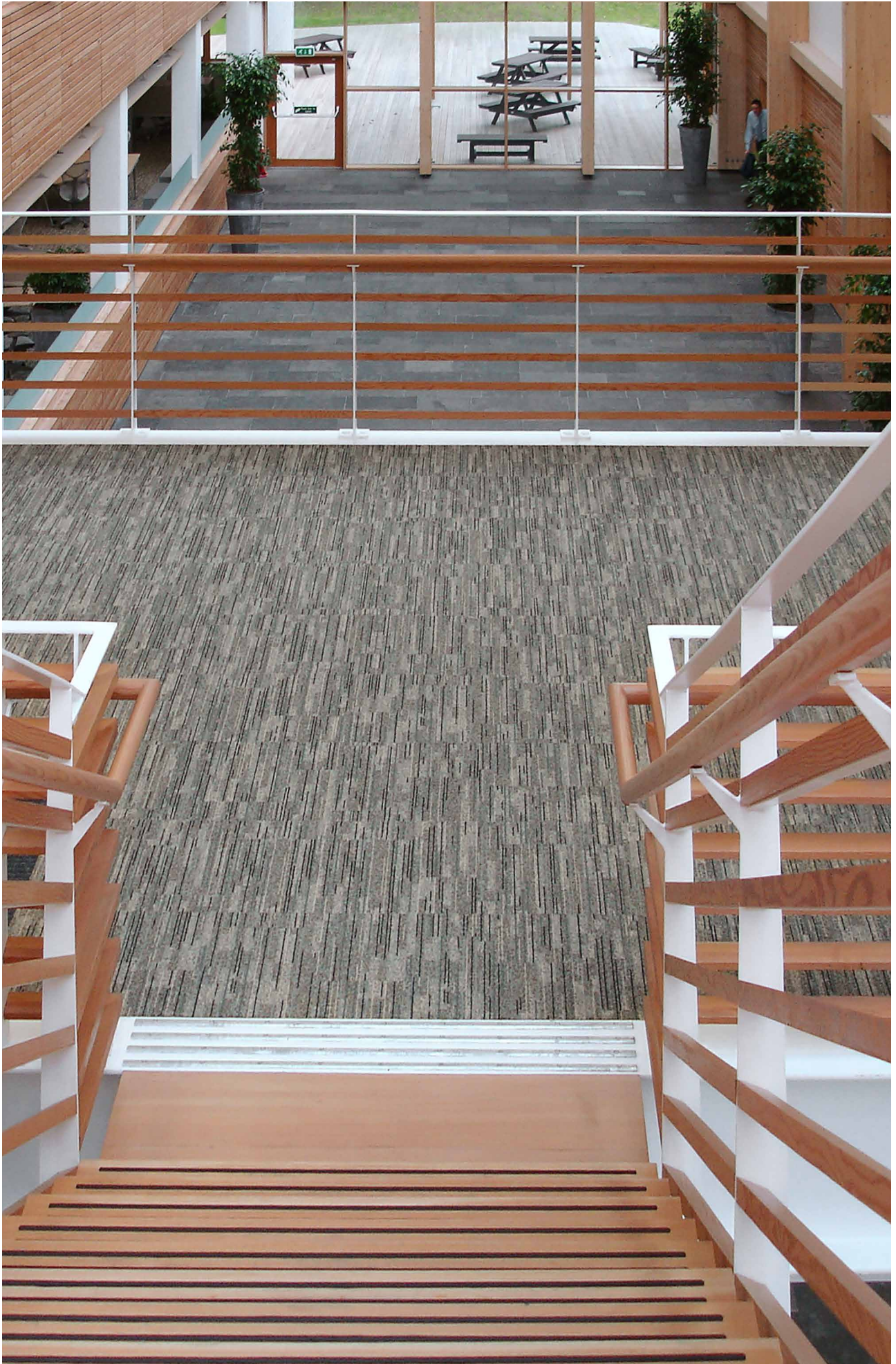




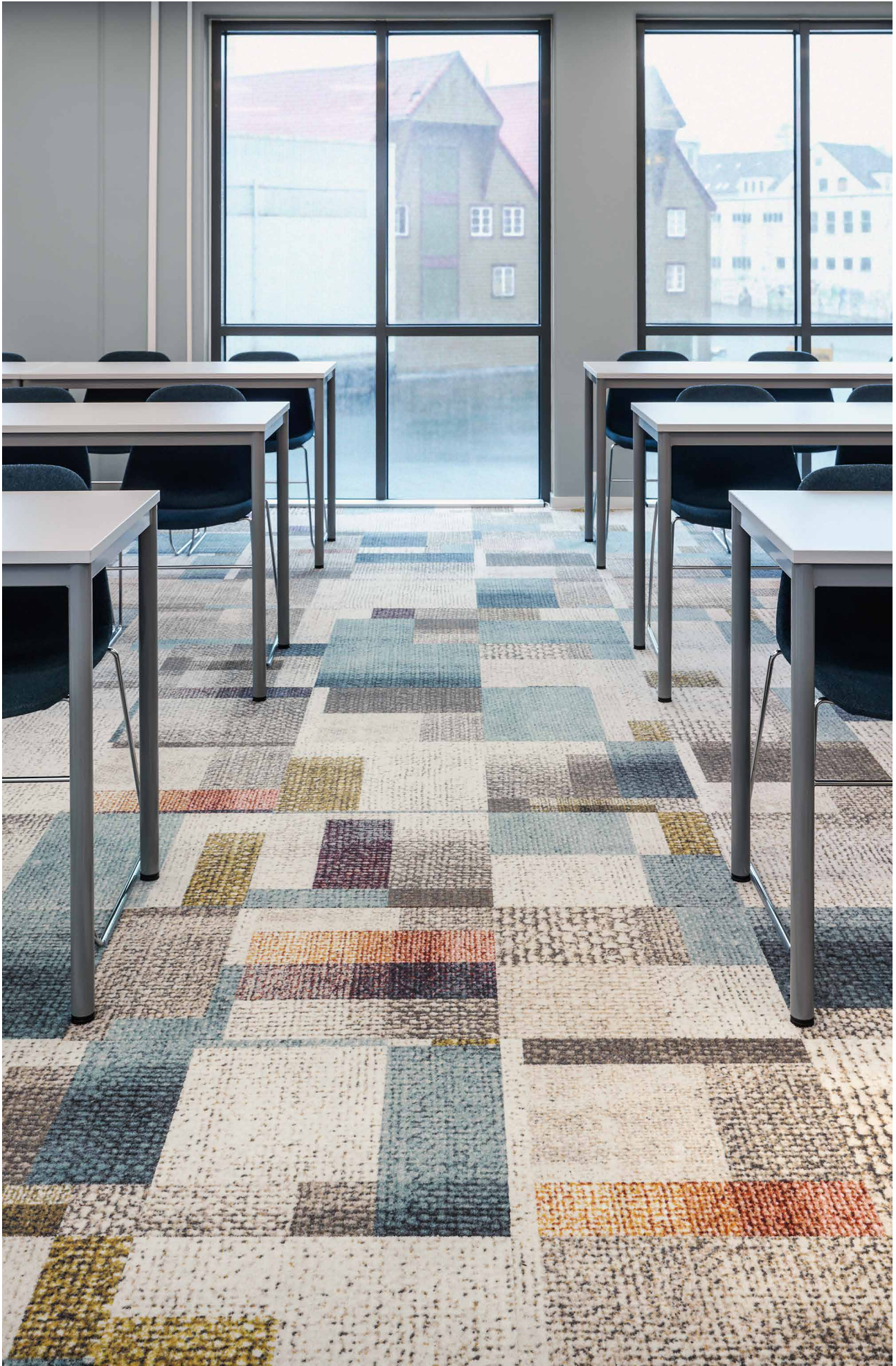












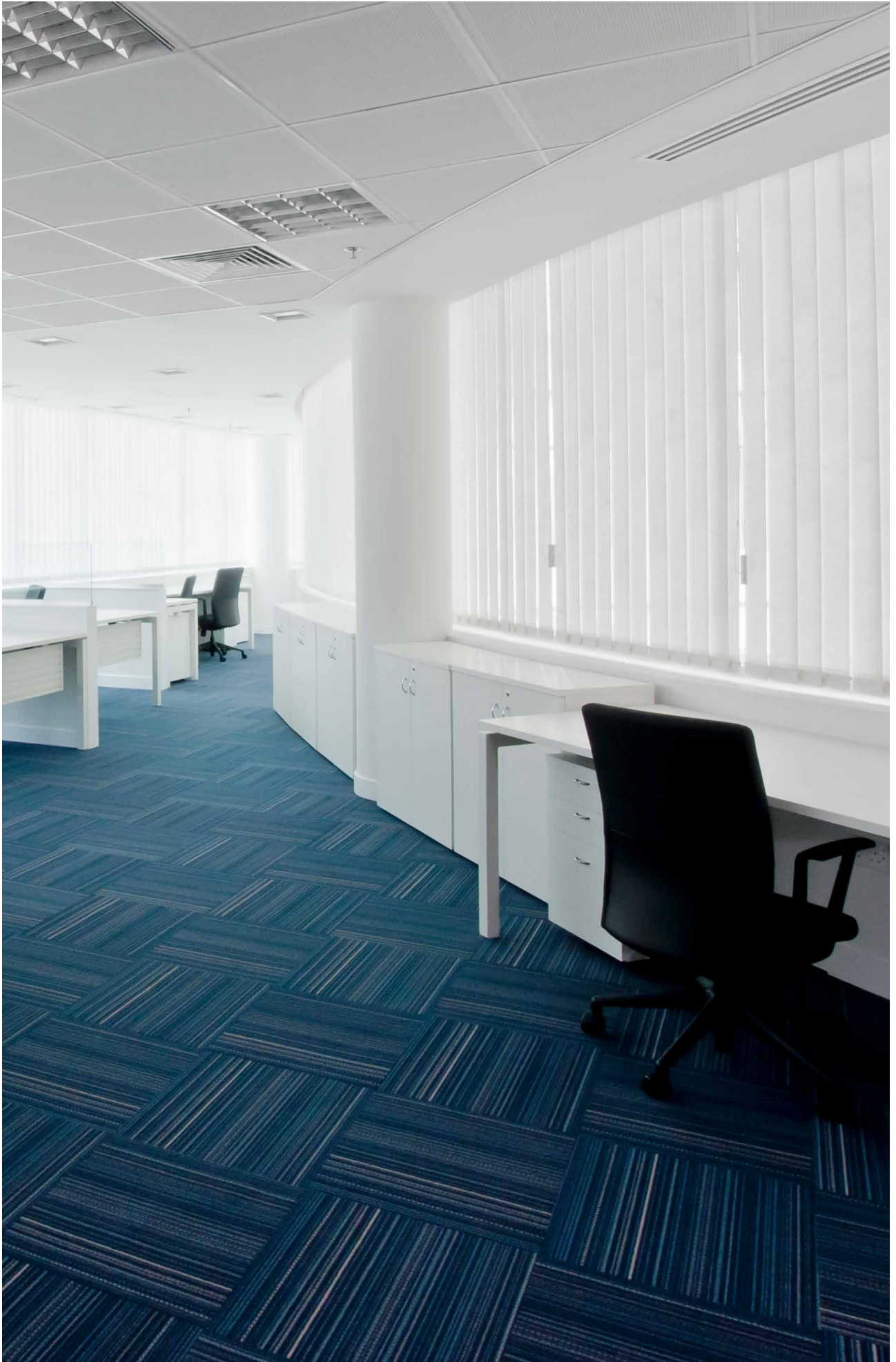








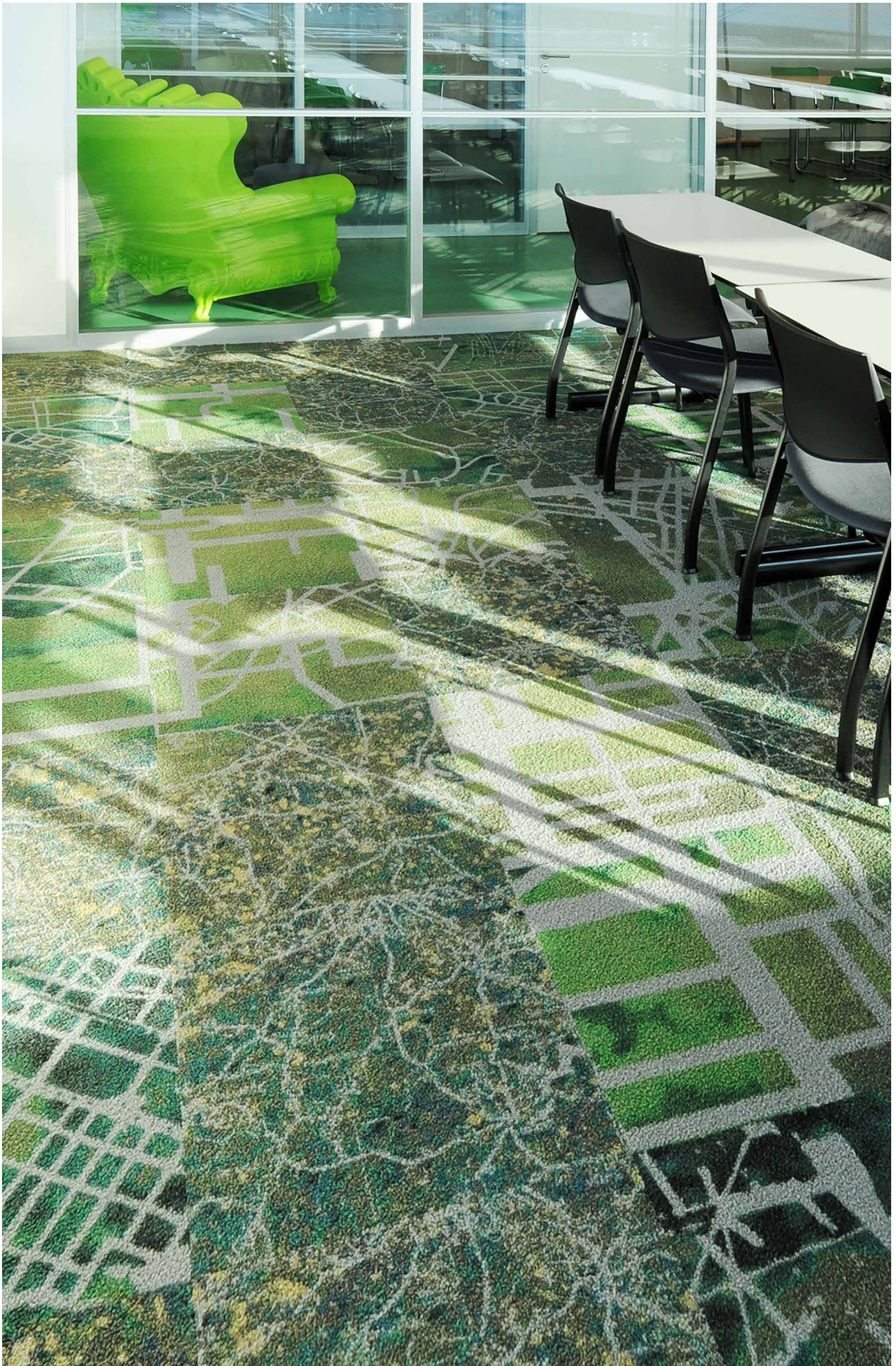
















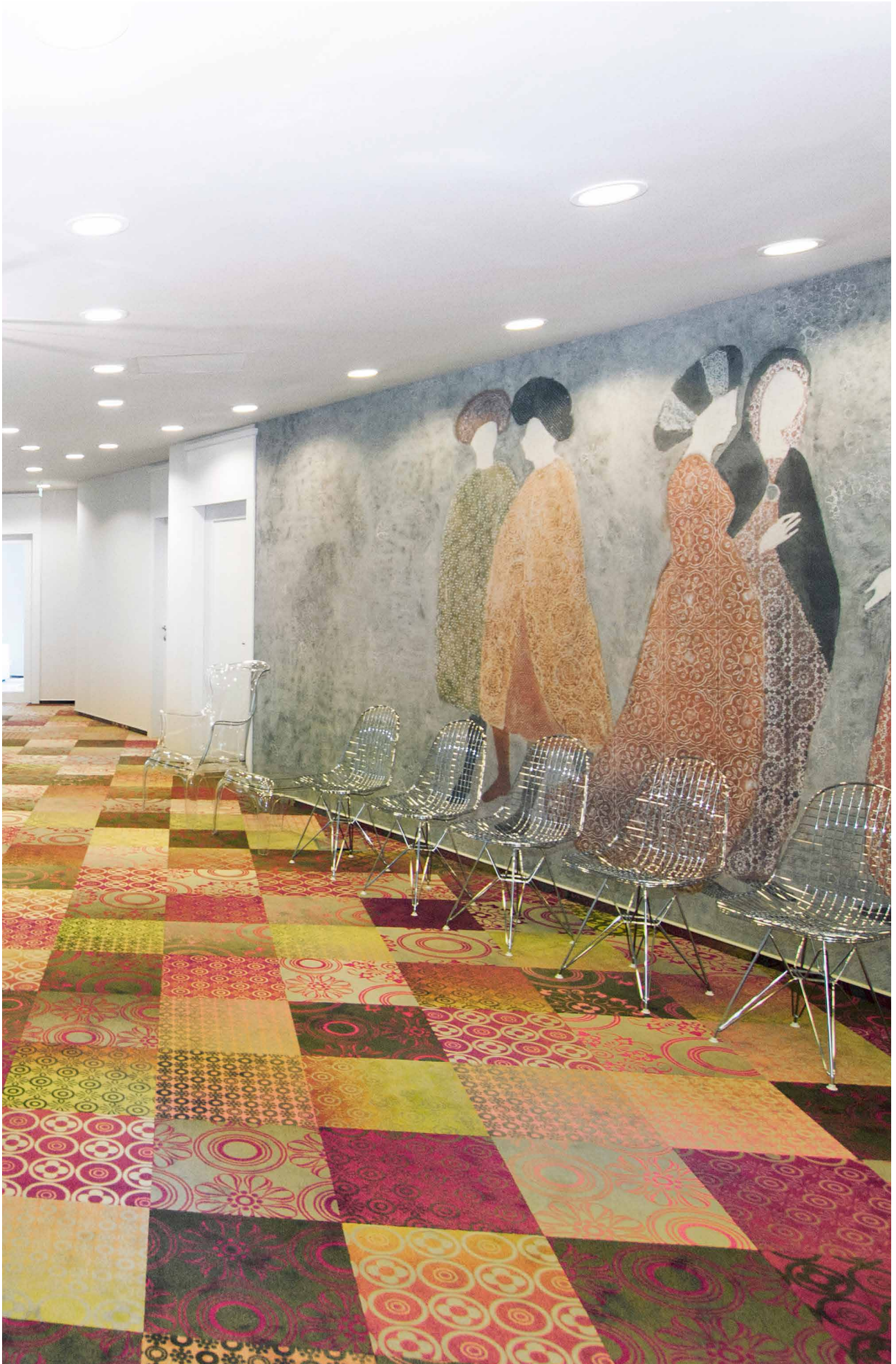














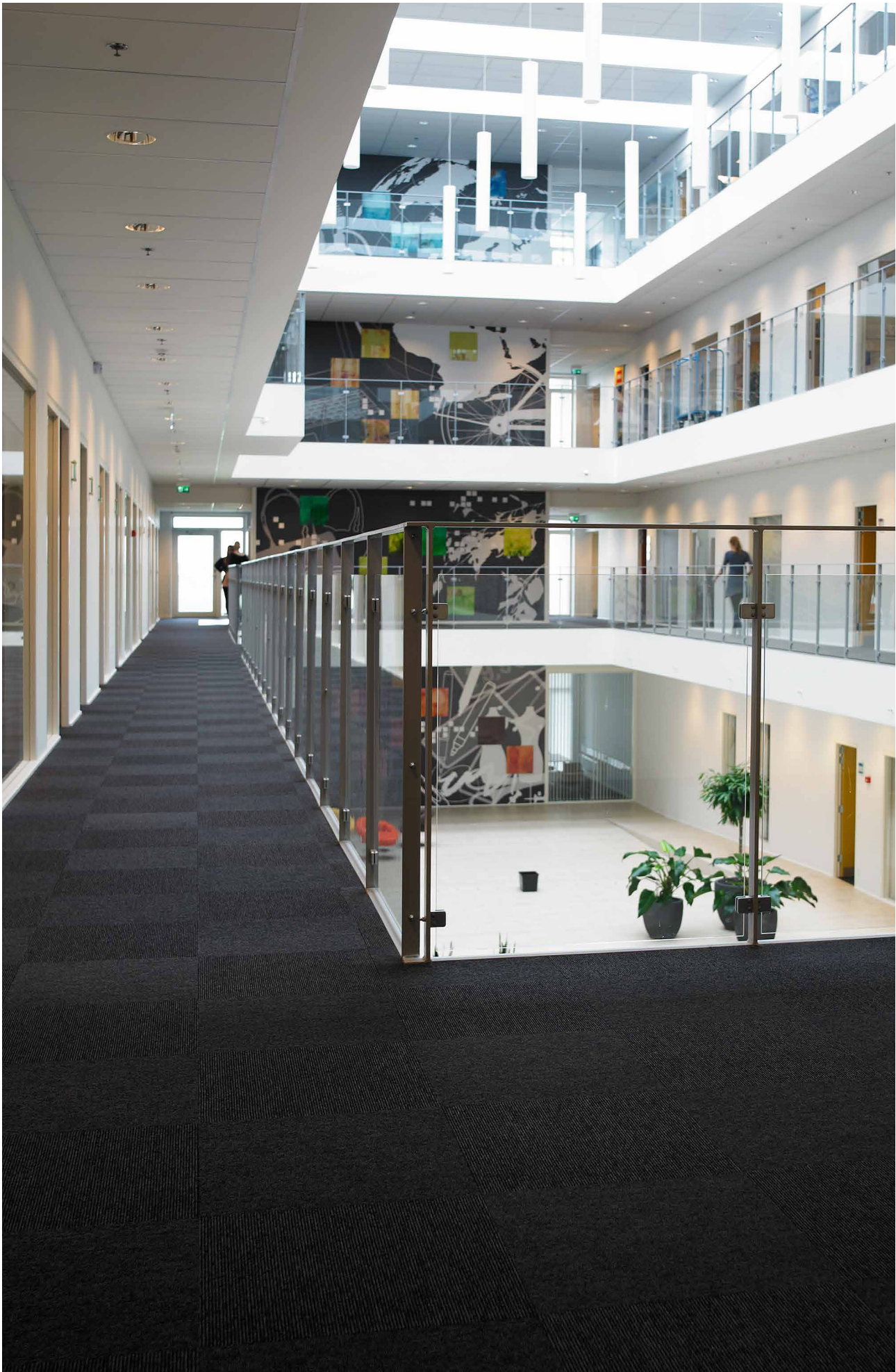


# CONTRA

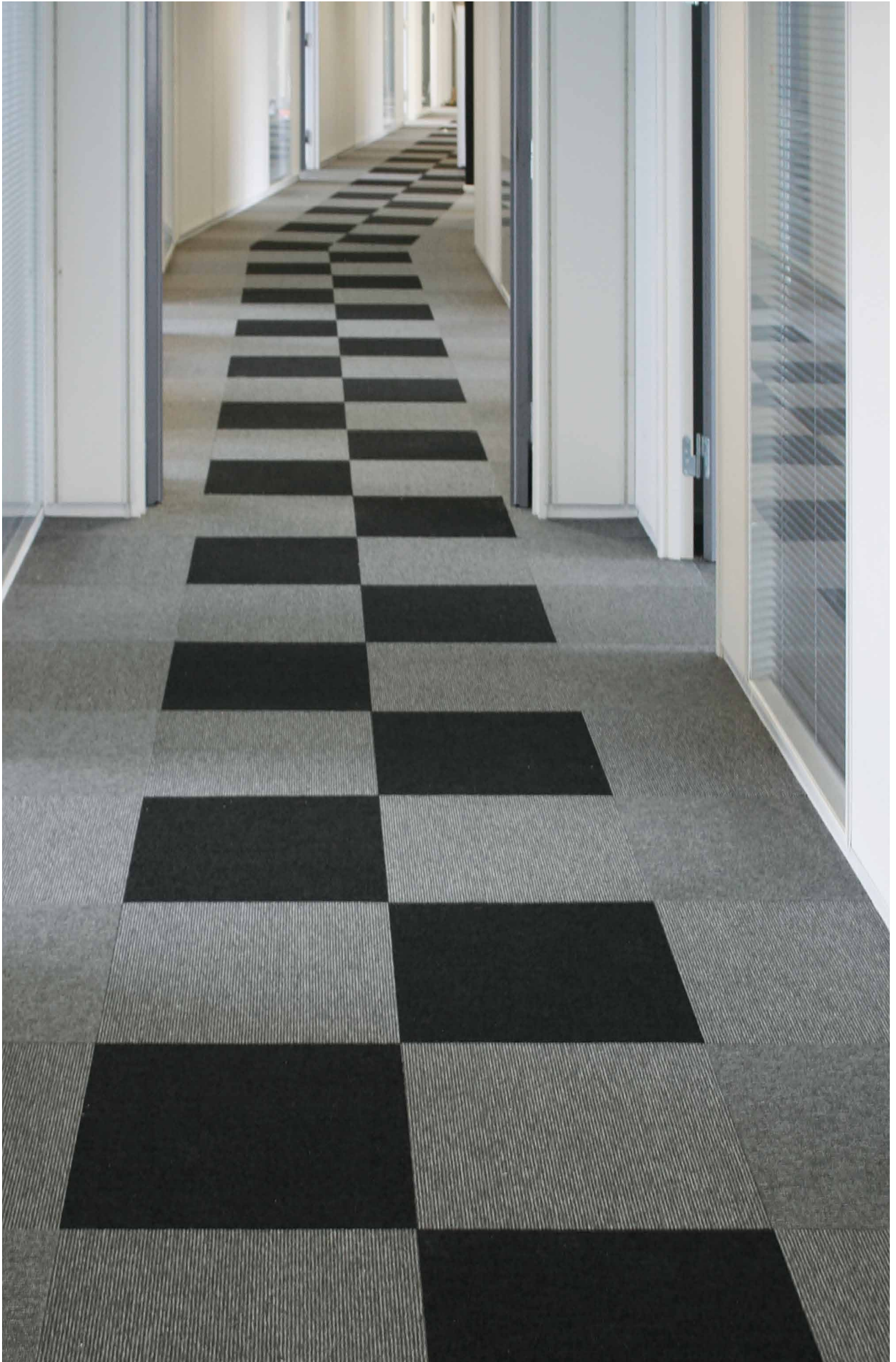








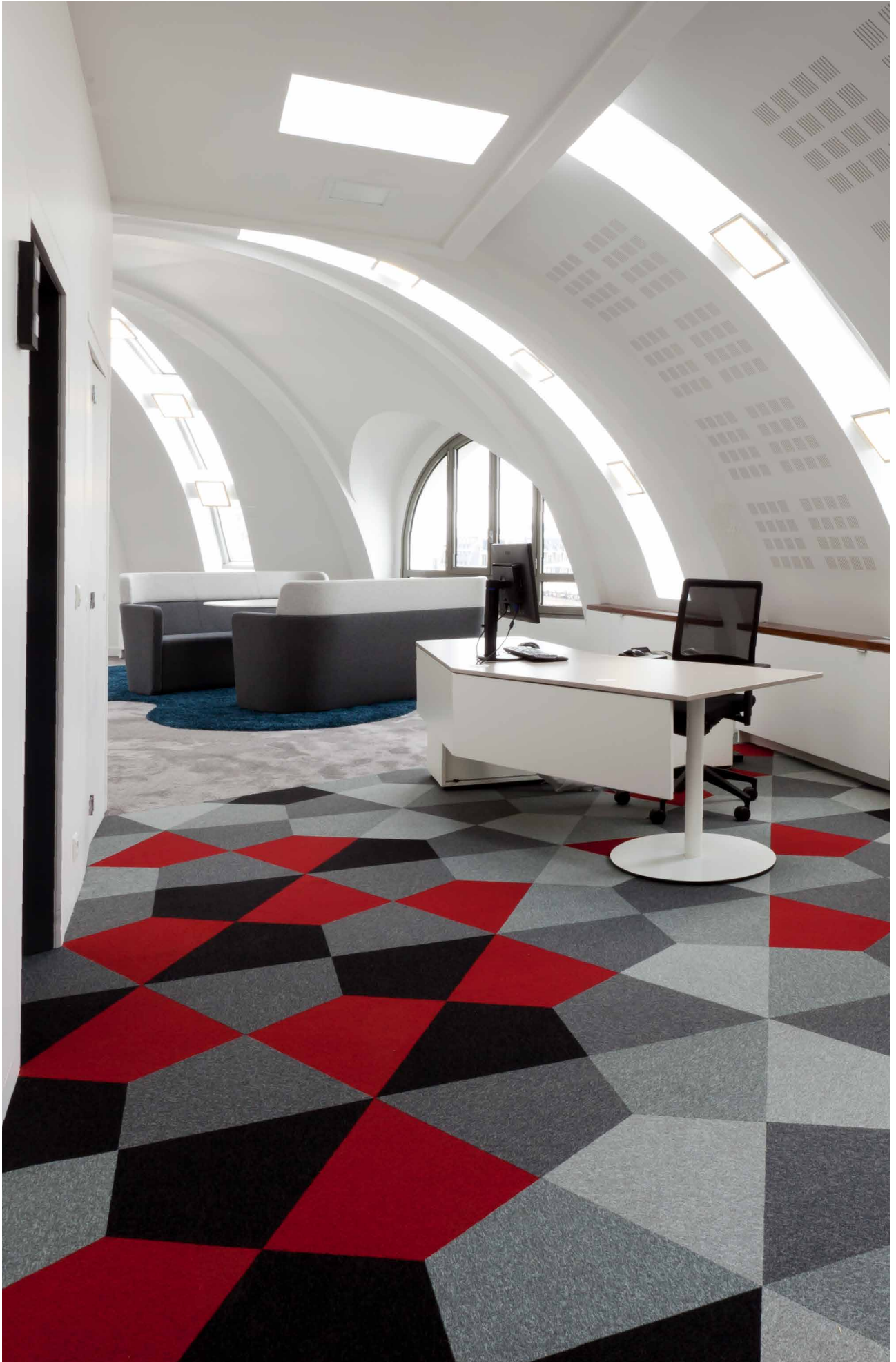














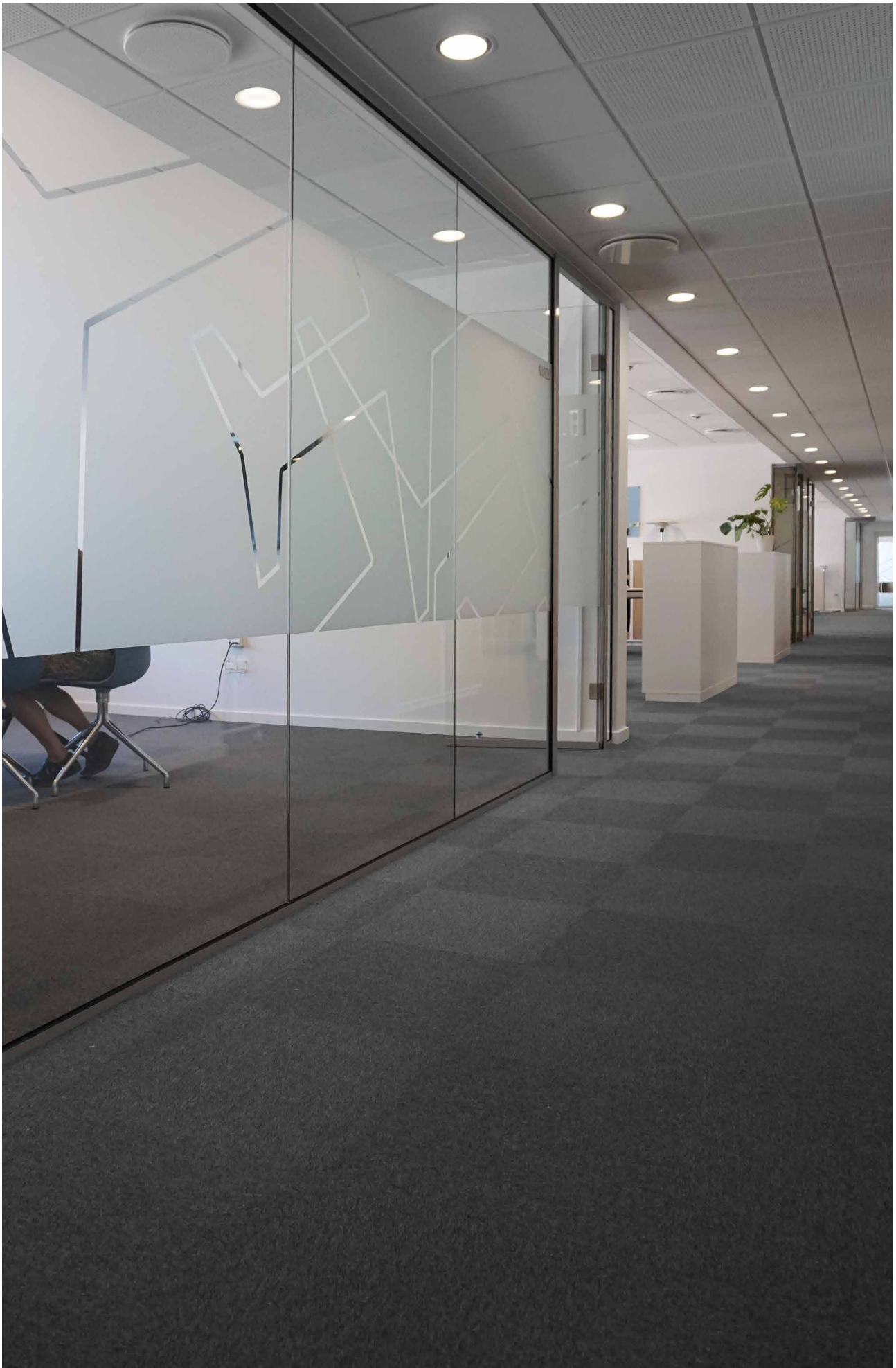
UNA







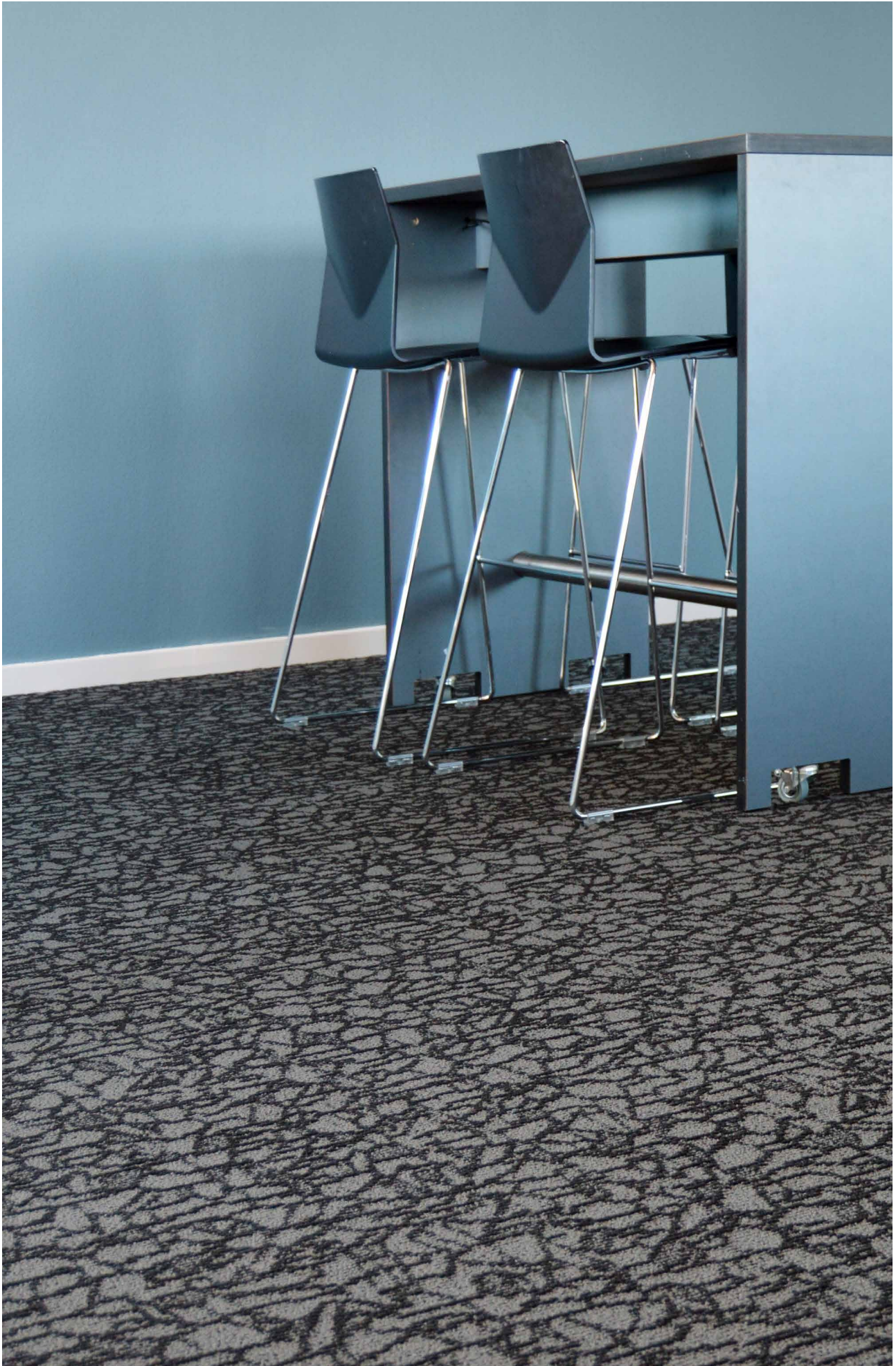


















**ege**<sup>®</sup>

THE URGE TO EXPLORE SPACE

[www.egecarpets.com](http://www.egecarpets.com)